



Forward Thinking, High Achieving.

# C.S. PORTER MIDDLE SCHOOL

Our proposal addresses safety and security concerns combined with improvements for our 21st century learners.



A systemwide initiative to develop schools that work smarter for our students.

MEET YOUR SMART SCHOOLS TEAM

The C.S. Porter Middle School team put months into this process. We appreciate the input from students, parents, faculty, neighbors and the MCPS board. If you have questions or would like to get involved, we encourage you to visit [www.mcpsmt.org/csporter](http://www.mcpsmt.org/csporter) or contact Principal Julie Robitaille at [jrobitaille@mcps.k12.mt.us](mailto:jrobitaille@mcps.k12.mt.us).

TEAM MEMBER CORE

- Melody Jeffries, Business/Community
- Peter Kesel, Parent
- Chris Whiteman, Teacher
- Andrea Schlueter, Classified
- Tia Schumacher, Student
- Julie Robitaille, Administrator

TEAM MEMBER EXPANDED

- Kathy Evjen, Parent
- Greg Robitaille, Business/Community
- Becky Krantz, Teacher
- Erica Ramsey, Classified
- Elliott Seymour, Student
- Erin Rummelhart, Parent
- Bella Spencer, Student
- Michelle Stearns, Teacher
- Bob Gearheart, Administrator

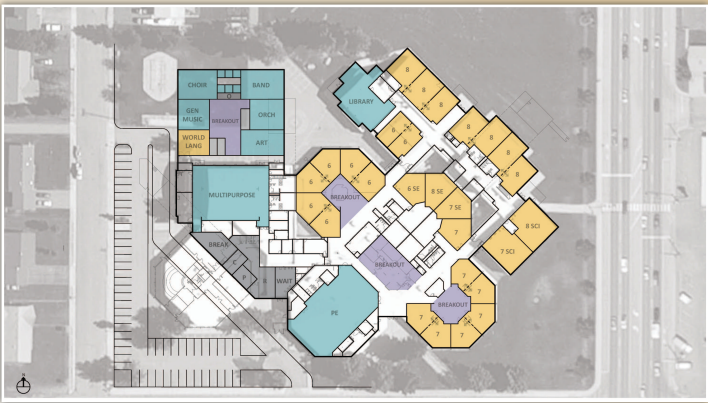
21ST CENTURY NEEDS

Built in 1967 as an elementary school, Missoula’s expansion transformed C.S. Porter into a middle school serving four elementaries. Overcrowded conditions today and increased enrollment projections create a critical need for learning space in addition to safety concerns at the Reserve Street location.

EXPANDING C.S. PORTER MIDDLE SCHOOL

Our proposed option to expand C.S. Porter Middle School would accommodate our increasing population in a dynamic 21st century learning environment, as well as solve our safety and security issues with a well-designed entry way. When complete, C.S. Porter will be a smarter school in many ways, including:

- A new music wing with performance and practice areas.
- Enhanced learning space to accommodate increased enrollment.
- Modified safety-minded renovation to create obvious main entry, with drop-off zone and secure waiting area.
- Building subdivided into secure zones with electronically activated door closers.
- High-speed/high-volume fiber optic distribution to breakout spaces for projects, enhancing teaching and learning.
- Installation of barn doors and garage doors with quality acoustical materials.
- Small learning communities that include traditional classrooms and support spaces.



OUR TEAM’S RECOMMENDED OPTION



OPTION E-1 EXPAND:

- Construct a new music wing.
- Improve classroom space.
- Improve space for support staff.
- Replace roof.
- Boiler and heat distribution.
- Safety and security improvements.

SECURITY

Modify facility to create obvious main entry, secure waiting area and ability to observe visitors approaching the building. Subdivide the building into secure zones with electronically activated door closers.

TECHNOLOGY

Develop high-speed/high-volume fiber optic distribution to breakout spaces for projects, presentations and technology in each learning community, enhanced with robust wireless and hard-wired access points.

ENVIRONMENT

Install barn doors and garage doors with quality acoustical materials between learning areas and breakout areas for projects, presentations and technology. Create small learning communities for teams of teachers and students that include traditional classrooms as well as important support spaces for 1:1 tutoring, small groups, planning centers, storage, etc.

FACILITIES STRATEGIC PLAN

Site Area: 7.46 acres  
Parking Spaces: 70  
Building Square Footage  
Existing: 92,989  
Demolition: 5,600  
Renovate: 5,600  
New: 10,000  
Estimated Project Budget: \$7,195,359\*  
Replacement Cost: \$20,440,374  
Remaining Deferred Maintenance & Energy Project Costs: \$0  
Rental / Lease / Sale Income: None  
Current Enrollment: 478  
Future Peak Enrollment: 596  
Capacity: 650-750  
Accessible Capacity: 650-750  
Accessible / Permanent Capacity: 650-750

\*All costs are projected based on averages for building costs, sizes and land prices. Final project budget will be developed during the design phase.



## NOW IS THE TIME TO INVEST IN SMARTER SCHOOLS

Education has never been more important than it is today. Our students face international competition for scholarships and jobs, and an increasing pace of change that impacts their futures. Yet, while the need for quality education continues to increase, our schools are physically in decline.

At Missoula County Public Schools, we realize that we must change if we're to keep up academically and economically as a community. That's why we launched Smart Schools 2020. Led by teams from each school, the initiative assesses needs by facility and prioritizes those needs in light of achieving our goals of a 21st Century Educational Culture and of being fiscally responsible.

By addressing schools now we prevent further deterioration of facilities, better prepare for population growth and ensure our students continue to get the educational opportunities they need to succeed in school and beyond.

## THE SMART SCHOOLS PROCESS

### **SCHOOL CENTRIC:**

Criteria and preferred options were established for each school by a team of teachers, administrators, students and parents from that school, along with members of the Missoula community.

### **COLLABORATIVE:**

Alternatives were shared at public meetings at each school. In addition, surveys were sent out systemwide to vet priorities.

### **REALISTIC:**

Team recommendations were reviewed by the steering committee and the elected board of trustees before a bond measure was drafted.

### **PUBLIC:**

Everyone is invited to review options and weigh in. Final support for the initiative will be determined by public election in November 2015.



To get involved, please visit [www.mcpsmt.org/csporter](http://www.mcpsmt.org/csporter) or contact Principal Julie Robitaille at [jrobitaille@mcps.k12.mt.us](mailto:jrobitaille@mcps.k12.mt.us).